



# HD-CONTROL

## Low Displacement Hydraulic Control



Control Systems

# Precision, Ultra-Efficient Control

Forefront Energy's HD Control units set a new benchmark for site control with low-displacement hydraulic actuators that deliver precision, efficiency, and sustainability. Designed for seamless integration with MRK Power systems, these self-contained units eliminate methane venting, reduce power demand, and provide fail-safe reliability, ensuring superior performance in all environments.

Reliability



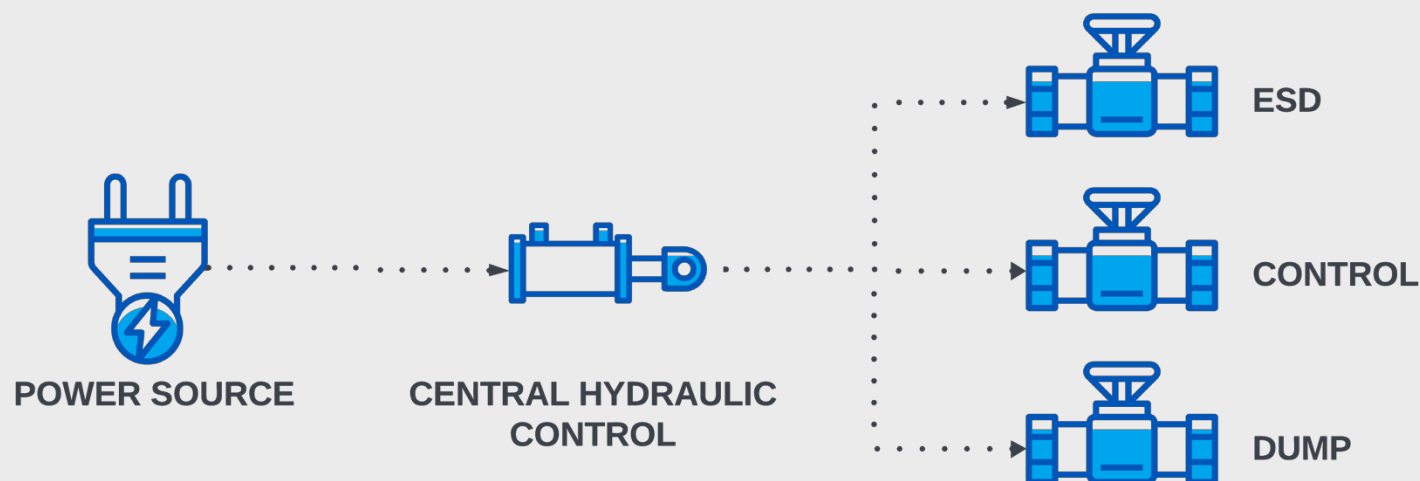
Sustainability



Easy Logistics



**FOREFRONT**  
ENERGY



## Precision Control, Maximum Efficiency

### Energy-Efficient

Low-displacement hydraulics minimize energy consumption while providing precise, high-thrust control, outperforming mechanical alternatives.

### Eliminates Methane Venting

Completely eliminates methane emissions by replacing venting pneumatic devices with hydraulic control systems.

### Rapid, Precise Operation

Achieve precise valve control with extended stroke lengths, high thrust, and rapid actuation in under three seconds.

### Fail-Safe Reliability

Designed with redundancy to ensure uninterrupted operation even in challenging environments or component failure scenarios.

### Scalable and Flexible Design

Control an unlimited number of actuators with centralized hydraulic systems, ideal for retrofits and new builds with minimal modifications.

### Seamless Integration

Optimized for use with MRK Power units, HD Control systems provide total power and control solutions for modern well-pad operations.

# HD-CONTROL Spec Sheet

## HD-1

## HD-3

## HD-n

### Features

Primary Use	Engineered for single-valve applications, such as Riser Isolation Valves.	Optimized for multi-valve control, ideal for a single-well site.	Engineered for high-capacity well sites.
Hydraulic Configuration	Integrated pump, accumulator, and tank housed with the actuator.	Same as HD1 but scaled to control multiple actuators.	Larger, centralized hydraulic setup housed in a theft-resistant, heated enclosure.
Housing	Compact, weatherproof design	Compact, weatherproof design	Theft-resistant, insulated aluminum cabinet with active heating

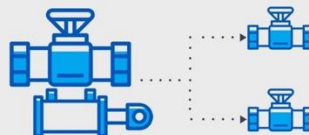
### Technical

Power Supply	24 VDC, 2A, 7A (max)	24 VDC, 2A, 7A (max)	24 VDC, scalable
Actuation Speed	<3 seconds per stroke	<3 seconds per stroke	Variable speeds for multiple valves
Operating Temperature	-40°C to +60°C (-40°F to +140°F)	-40°C to +60°C (-40°F to +140°F)	-40°C to +60°C (-40°F to +140°F)
Hydraulic Pressure	3,000 PSI	3,000 PSI	3,000 PSI

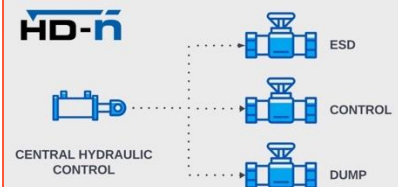
### HD-1



### HD-3



### HD-n





**FOREFRONT**  
E N E R G Y

5511 50th Street  
Pouce Coupe, BC  
V0C 2C0

250-719-8852

F O R E F R O N T - E N E R G Y . C O M